

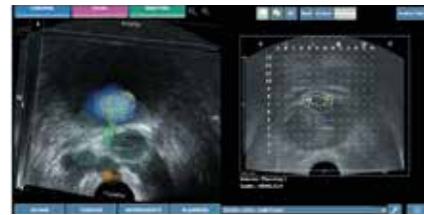
# Guided workflow

## PREOPERATIVELY

### > Biopsy data recall

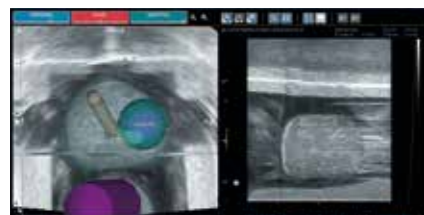
Personalize treatment planning based on previous biopsy data recall.

## INTRAOPERATIVELY



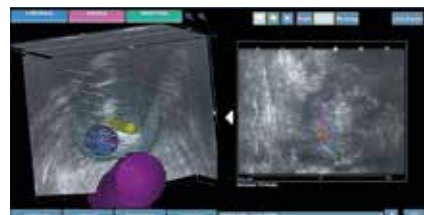
### > Treatment preparation

Organs at risk (urethra, rectum) and treatment margins can be contoured and read-justed intraoperatively in real time.



### > Ablation simulation

Ablation predictive charts can be displayed in 3D prior to actual needle insertion to optimize the lesion coverage.



### > Treatment needle guidance

After OBT Fusion® guiding, the thin treatment needle can be inserted in the prostate and stabilized with the Z-Lock accessory.

### > Treatment needle guidance

Ablations are scalable from 2 to 5 minutes depending on the lesion size and shape.

## POSTOPERATIVELY

### > Automatic treatment report

A dedicated report allows to confirm the intervention success in a glance.

To learn more, visit [koelis.com](https://www.koelis.com)

**KOELIS SAS**  
22, chemin du Vieux Chêne  
38240 Meylan  
France

**KOELIS Inc.**  
116, Village Boulevard Suite 308  
Princeton, NJ 08540  
USA

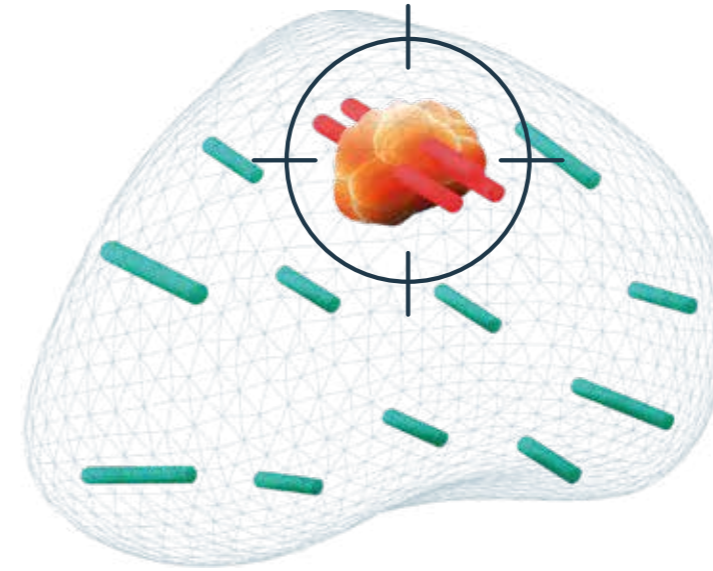
**KOELIS GmbH**  
Postfach 10 05 43  
66005 Saarbrücken  
Germany

## KOELIS Trinity® Targeted Microwave Ablation

Because patient's quality of life matters

# Koelis' solution for prostate focal ablation

For physicians looking to create or complement their prostate cancer focal therapy program, only KOELIS® Targeted Microwave Ablation provides a **streamlined workflow comparable to a fusion biopsy, a high treatment accuracy** provided by a new generation microwave combined with KOELIS® patented organ-tracking algorithm that **delivers personalized focal treatment in an ambulatory setting.**



## Unique capabilities

- > Individualized planning with 2<sup>nd</sup> Look
- > Automatic ablation margins
- > 3D Urethra and Rectum delineation
- > Predictive ablation display
- > Dedicated interventional report
- > Follow-up with 2<sup>nd</sup> Look

TATO  
VLL™ Microwave Generator

Koelis Trinity®  
MRI/US OBT Fusion® system



## Koelis® TMA

Koelis Trinity® and TATO system are used together to offer new capabilities in prostate focal ablation.

Koelis Trinity® is used during the initial diagnosis, planning, and follow-up of the treatment.  
TATO is used to deliver quick and sharp ablations through thin needles in the tissues.

- > All-in-one diagnostic and focal treatment platform
- > Straight forward workflow
- > Intervention in less than 1 hour
- > Ambulatory setting
- > Scalable treatment
- > Single needle treatment

01

### Value for **physicians**

The most streamlined solution to implement focal therapy in your hospital

- > Light setup
- > Intuitive workflow & fast learning curve
- > High treatment precision due to microwave physics leading to predictable treatment

02

### Value for the **patients**

The most precise treatment while providing the fastest post-op recovery

- > Immediate return to normal daily activities
- > Painless intervention\*
- > Efficient at treating the cancer\*

03

### Value for **hospital administration**

A new treatment approach for prostate cancer that increases your hospital activity while optimizing OR resources

- > Increased hospital activity & patient attractiveness
- > Optimization of OR resources

\* Peter Ka-Fung Chiu et al. Nature Prostate Cancer and prostate disease, July 2022, Prince of Wales hospital – Hong Kong