

INNOVEX

Innovate Your Future

Innovex is a leading single use endoscopes manufacturer focusing on Urology, Gastroenterology, Pulmonology, Gynecology and General Surgery.



- Eliminates costs associated with reprocessing, repairs, and maintenance
- Single-use and sterile for enhanced patient safety

- Readily available and simplifies workflows in the operating room and daily practices
- Integrated connection cable to the video processor

- Laser-cut stainless steel in a snake skeleton-like structure, as solid and flexible as a reusable endoscope
- Uncompromised image quality, scope handling, and maneuverability

Cystoscope

CY55H-24EU
CY55H-24US

INNOVEX's flexible single-use cystoscope offers excellent visualization of the urethra and bladder for diagnostic and therapeutic procedures.*



- 1 Easy image and video capture with just the touch of a button
- 2 Built-in locking mechanism provides free OR locking status for precise lever control and reduced thumb fatigue
- 3 Luer connection working channel (T-luer adapter is included)
- 4 Lightweight and ergonomic



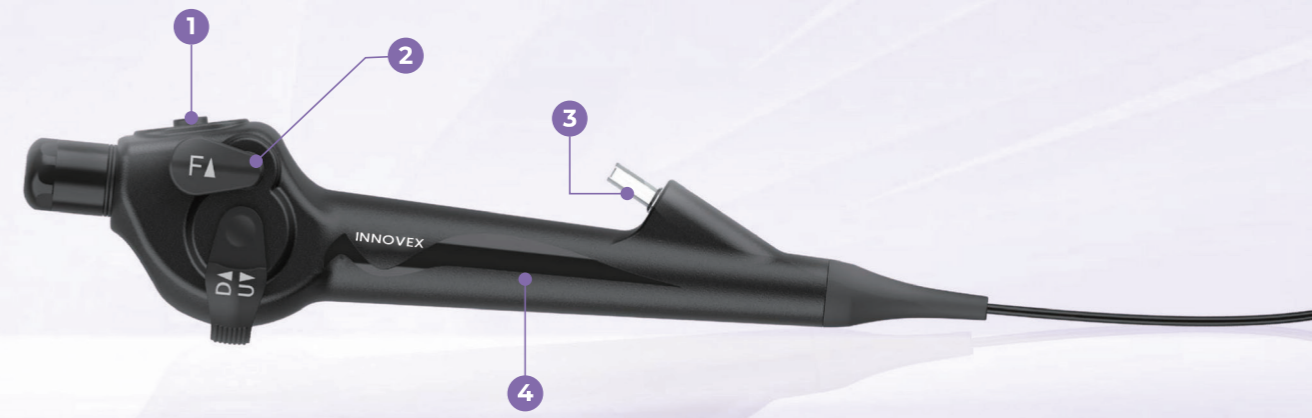
Cystoscope Distal Tip

- 210° up / 180° down deflection
- Rounded tip with 16.5 Fr outer diameter
- 7.2 Fr working channel
- CMOS technology with 640,000 pixel resolution

7.5Fr Ureterorenoscope

US27F-12-EU
US27F-12-US

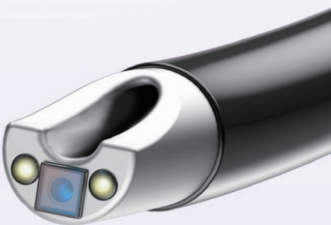
The next-generation flexible single-use ureterorenoscope is used to visualize organs, cavities and canals in the urinary tract (urethra, bladder, ureter, calyces and renal papillae) via transurethral access routes. It can also be used in conjunction with endoscopic accessories to perform various diagnostic and therapeutic procedures in the urinary tract.*



- 1 Easy image and video capture with just the touch of a button
- 2 Built-in locking mechanism provides free OR locking status for precise lever control and reduced thumb fatigue
- 3 Luer connection working channel (T-luer adapter is included)
- 4 Traditional look and feel, lightweight

URS SLIM 7.5 Distal Tip

- 275° bidirectional deflection
- Tapered tip for easy insertion
- 3.6 Fr working channel
- CMOS technology with 160,000 pixel resolution

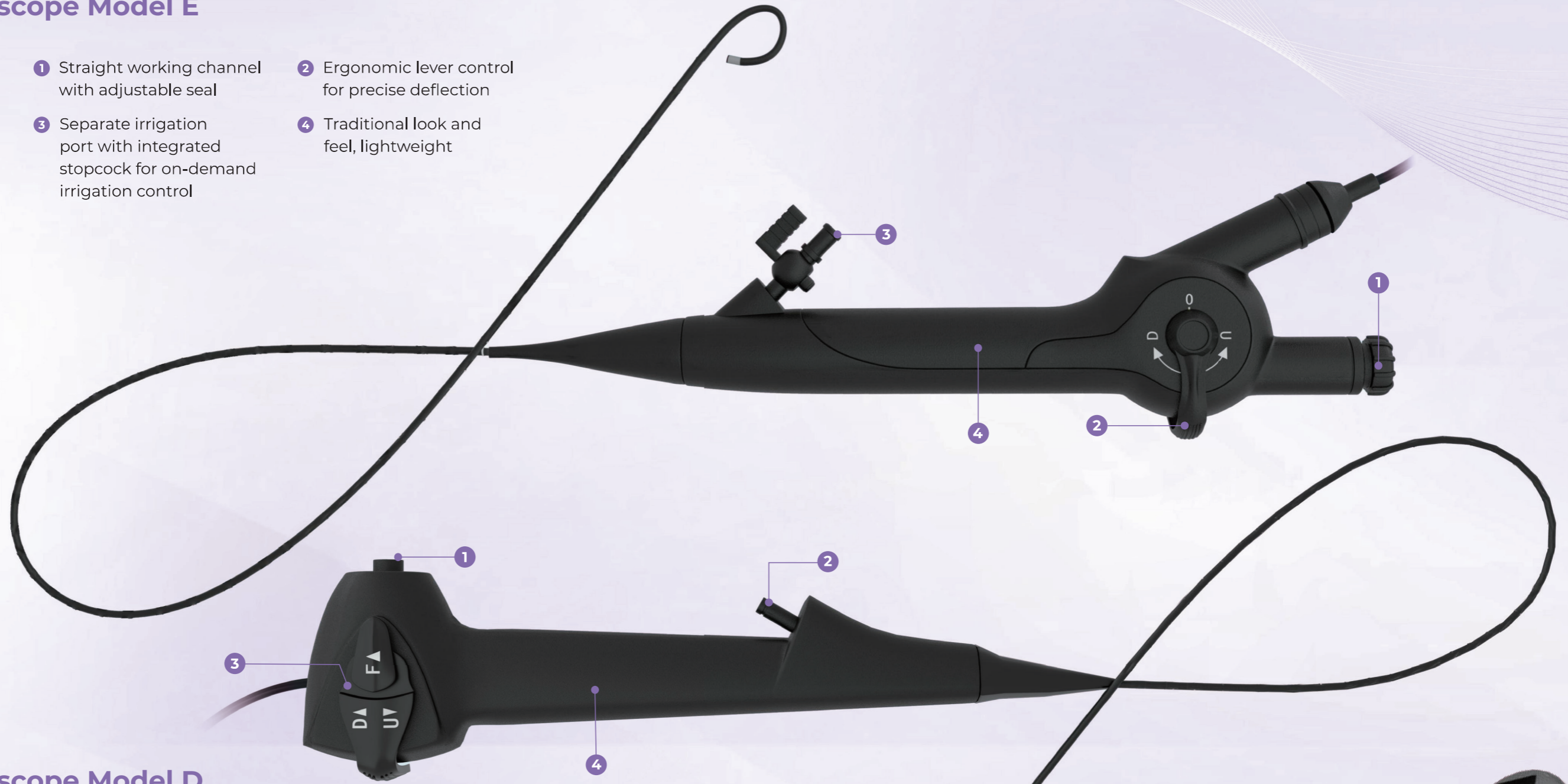


*Further information on the intended use can be found in the instructions for use (IFU).

Ureterorenoscope Model E

US31E-12-EU
US31E-12-US

- 1 Straight working channel with adjustable seal
- 2 Ergonomic lever control for precise deflection
- 3 Separate irrigation port with integrated stopcock for on-demand irrigation control
- 4 Traditional look and feel, lightweight



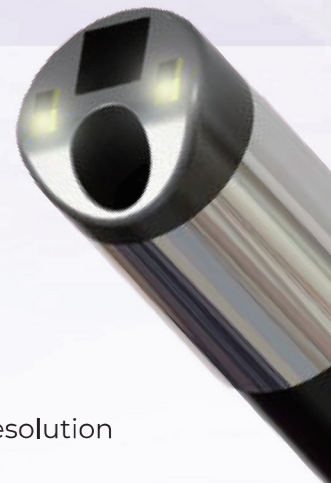
Ureterorenoscope Model D

US31D-12-EU
US31D-12-US

- 1 Easy image and video capture with just the touch of a button
- 2 Luer connection working channel (T-luer adapter is included)
- 3 Built-in locking mechanism provides free OR locking status for precise lever control and reduced thumb fatigue
- 4 Lightweight and ergonomic

URS Model E / Model D Distal Tip

- 275° bidirectional deflection
- Tapered tip for easy insertion
- 3.6 Fr working channel
- CMOS technology with 160,000 pixel resolution

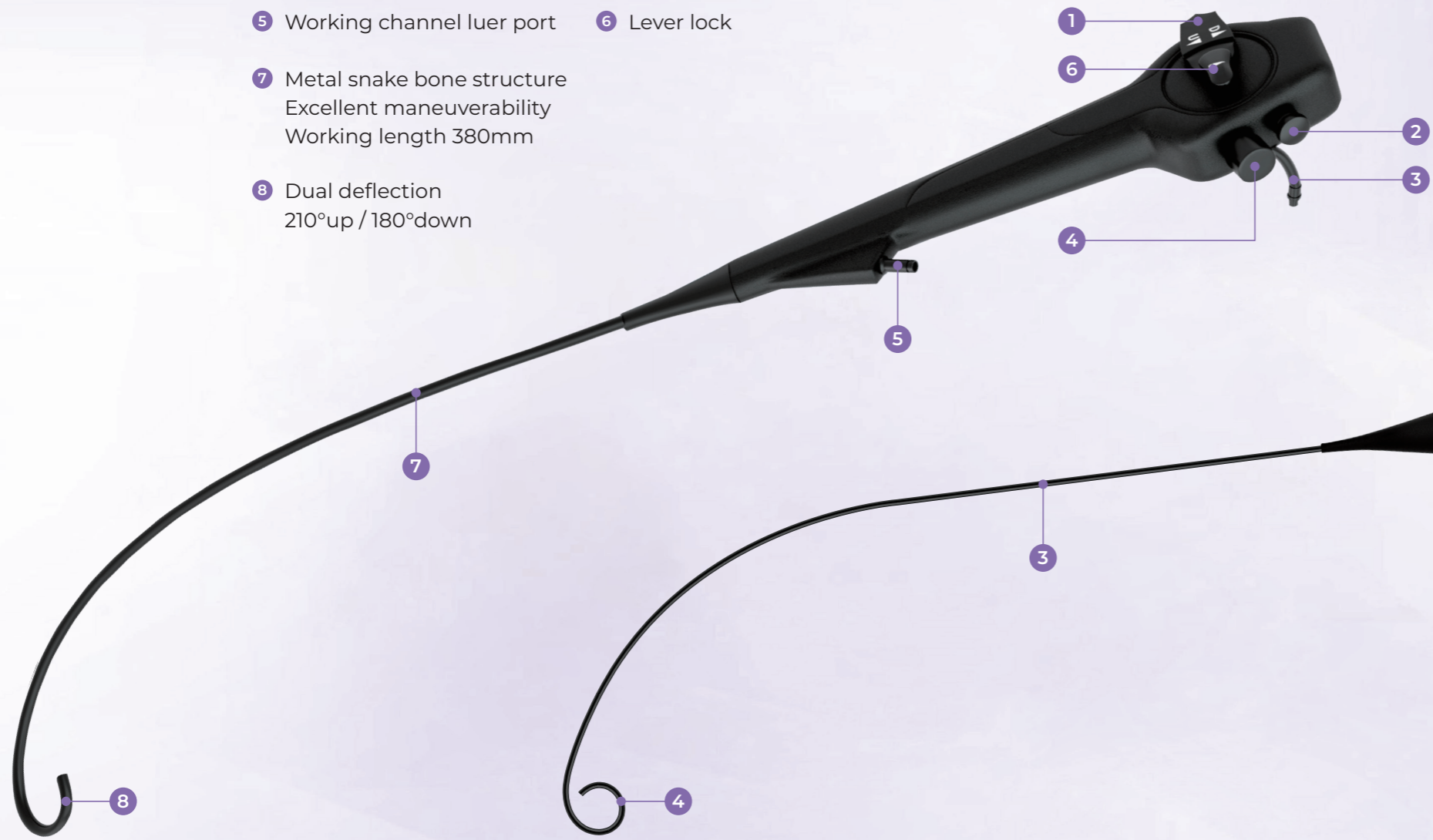


*Further information on the intended use can be found in the instructions for use (IFU).

Choledochoscope

CS50H-20EU
CS50H-20US

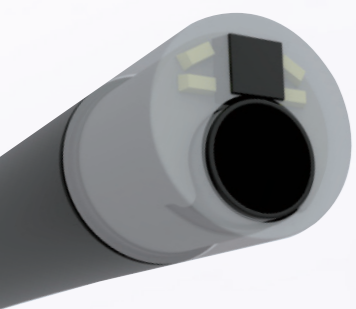
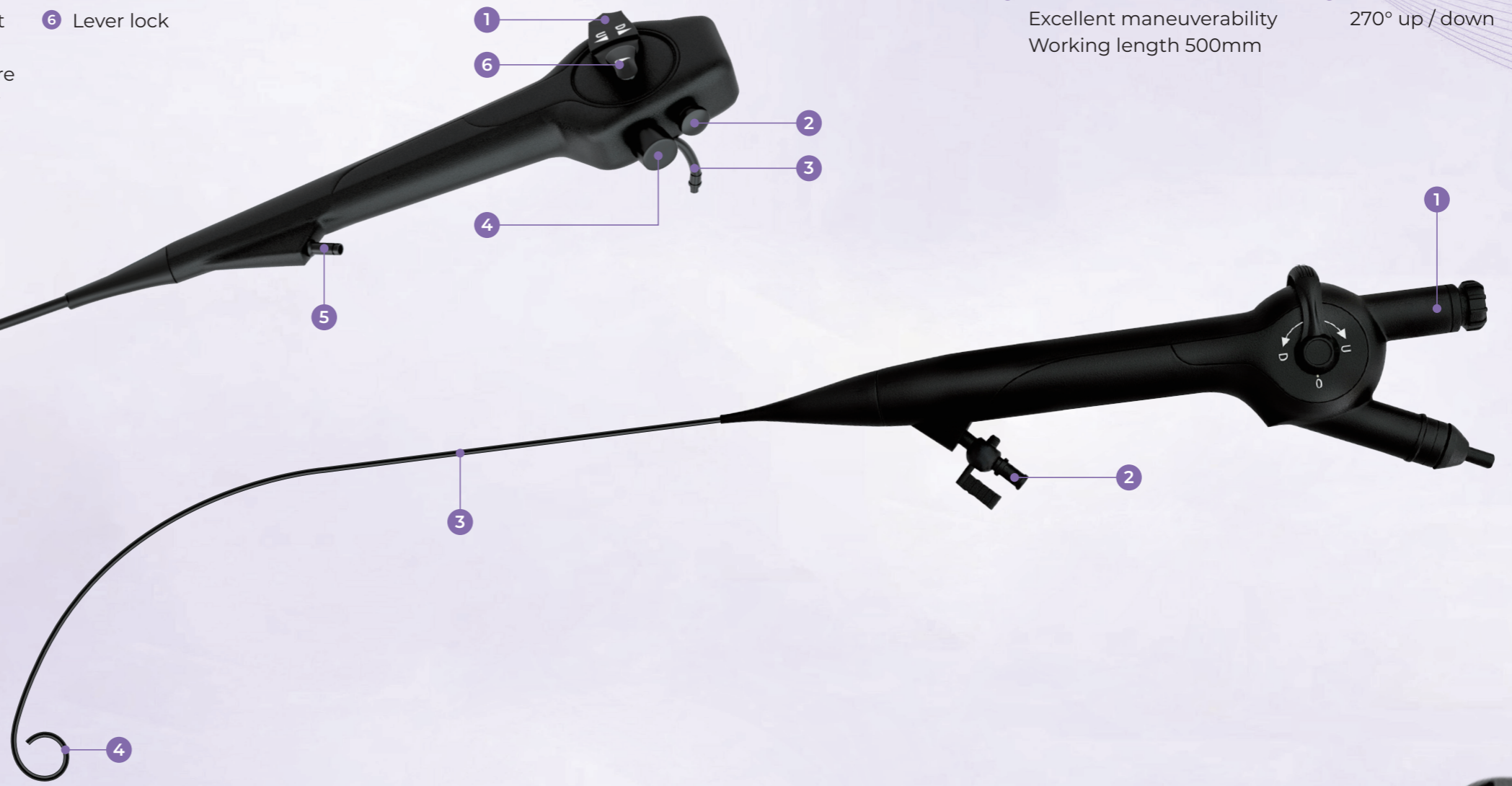
- 1 Deflection lever
- 2 Photo & video button
- 3 Aspiration connector
- 4 Aspiration button
- 5 Working channel luer port
- 6 Lever lock
- 7 Metal snake bone structure
Excellent maneuverability
Working length 380mm
- 8 Dual deflection
210°up / 180°down



Choledochoscope

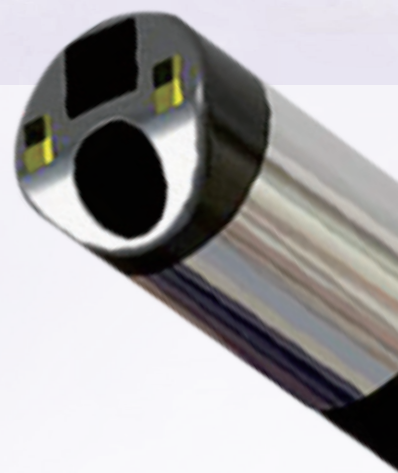
CF132B-12-EU
CF132B-12-US

- 1 Straight working channel
with adjustable seal
- 2 Luer port for suction or
irrigation
- 3 Metal snake bone structure
Excellent maneuverability
Working length 500mm
- 4 Dual deflection
270° up / down



Choledochoscope Distal Tip

- CMOS 640K
- 4 LED illumination
- Field of view 110°±10%
- Depth of field: 5mm-100mm



Choledochoscope Distal Tip

- CMOS 160k
- 2 LED illumination
- Field of view 110°±10%
- Depth of field :3mm-100mm

Choledochoscope (for ERCP)

CD136A-12



- 1 Small Deflection Wheel
- 2 Big Deflection Wheel
- 3 Deflection Lock
- 4 Attachment Strap
- 5 Working Channel Luer Port

Bronchoscope

BS41H-12EU
BS41H-12US

BS50H-20EU
BS50H-20US

BS59H-28EU
BS59H-28US



- 1 Photo & video button
- 2 Aspiration connector
- 3 Aspiration button
- 4 Working channel luer port



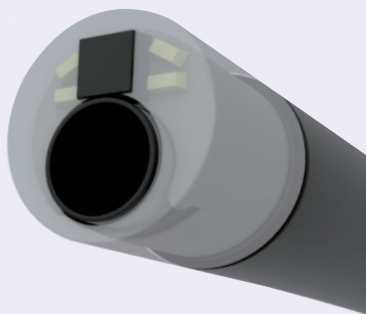
Rounded tip	12.3Fr/4.1mm	15.0Fr/5.0mm	17.7Fr/5.9mm
Working channel	3.6Fr/1.2mm	6.0Fr/2.0mm	8.4Fr/2.8mm

Choledochoscope (for ERCP) Distal Tip

- CMOS technology with 160,000 pixel resolution
- 2 LED illumination
- 3.6Fr Working channel for accessories and aspiration

Bronchoscope Distal Tip

- CMOS 640k
- 4 LED illumination
- Field of view 110°±10%
- Depth of field : 5mm-100mm



INNOVEX Video Processors

Designed for and compatible with INNOVEX URS & CYSTO endoscopes

Adaptive LED light control function offers clear and sharp images

Powerful processors with advanced image algorithm for optimized image quality

Integrated USB port for external data storage

For direct integration into the operating room video system



Intuitive control layout using the buttons placed on the front

Portable touchscreen monitor with integrated video processor

Built-in stand for convenient placement

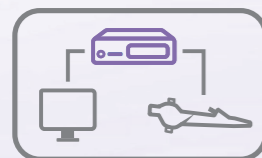


Stand-alone, battery-powered monitor

Optional connectivity to external monitors

Video Processor

Order information	EOS-H-01
Dimensions	(W) 308 mm x (L) 380 mm x (H) 108 mm
Weight	5 kg
Connections	USB (2x), DVI (2x), HD-SDI, VGA



The **Video Processor** connects seamlessly with standard monitor types, displaying endoscopic imaging via a transmission cable for direct integration into the operating room video system.

Portable Monitor with integrated video processor

Order information	EA100
Dimensions	(W) 210 mm x (L) 320 mm x (H) 45 mm
Weight	1.5 kg
Connections	USB, DVI, SDI
Screen Size	13.3"
Screen Resolution	1920 x 1080
Battery Operation*	More than 3 hours
Usability	Touchscreen monitor

*Typical battery runtime of a new, fully charged battery (the displaying screen turned on and scope connected) is more than 3 hours. Connection cable included in the scope of delivery.



The versatile **Portable Monitor** offers optional connectivity to standard monitor types and functions as a stand-alone unit, displaying endoscopic imaging via a transmission cable for easy integration into any operating room.

Urology

	Cystoscope	URS SLIM 7.5	URS Model E	URS Model D
	CY55H-24EU	US27F-12-EU	US31E-12-EU	US31D-12-EU
Order information				
	CY55H-24US	US27F-12-US	US31E-12-US	US31D-12-US
Nominal distal tip	16.5Fr/5.5mm	8.1Fr/2.7mm	9.6Fr/3.2mm	9.6Fr/3.2mm
Nominal shaft (OD)	15.6Fr/5.2mm	7.5Fr/2.5mm	8.55Fr/2.85mm	8.55Fr/2.85mm
Working channel	7.2Fr/2.4mm	3.6Fr/1.2mm	3.6Fr/1.2mm	3.6Fr/1.2mm
Working length	380mm	670mm	670mm	670mm
Deflection	210°up/180°down	275°up/down	275°up/down	275°up/down
Illumination	4LEDs	2 Optical Fiber	2LEDs	2LEDs
Field of view	110°+/-10%	120°+/-10%	110°+/-10%	110°+/-10%
Depth of field	5-100mm	3-100mm	3-100mm	3-100mm
CMos pixel	800*800	400*400	400*400	400*400

Others

	Choledochoscope	Choledochoscope	Choledochoscope for ERCP	Bronchoscope 4.1mm/1.2mm	Bronchoscope 5.0mm/2.0mm	Bronchoscope 5.9mm/2.8mm
	CS50H-20EU	CF132B-12-EU		BS41H-12EU	BS50H-20EU	BS59H-28EU
Order information			CD136A-12			
	CS50H-20US	CF132B-12-US		BS41H-12US	BS50H-20US	BS59H-28US
Nominal distal tip	15Fr/5.0mm	9.6Fr/3.2mm	10.8Fr/3.6mm	12.3Fr/4.1mm	15Fr/5.0mm	17.7Fr/5.9mm
Nominal shaft (OD)	14.7Fr/4.9mm	8.55Fr/2.85mm	10.5Fr/3.5mm	11.4Fr/3.8mm	14.7Fr/4.9mm	16.8Fr/5.6mm
Working channel	6.0Fr/2.0mm	3.6Fr/1.2mm	3.6Fr/1.2mm	3.6Fr/1.2mm	6.0Fr/2.0mm	8.4Fr/2.8mm
Working length	380mm	5000mm	2140mm	620mm	620mm	620mm
Deflection	210°up/180°down	270°up/down	30° with accessories in working channel	210°up/180°down	210°up/180°down	210°up/180°down
Illumination	4LEDs	2LEDs	LED	4LEDs	4LEDs	4LEDs
Field of view	110°+/-10%	110°+/-10%	120°	110°+/-10%	110°+/-10%	110°+/-10%
Depth of field	5-100mm	3-100mm	5mm□100mm	5-100mm	5-100mm	5-100mm
CMos pixel	800*800	400*400	16w	800*800	800*800	800*800



Scan here to **contact us**

www.innovexmed.com.cn/contact.html

INNOVEX MEDICAL

Web: www.innovexmed.com.cn

Email: global@innovexmed.com.cn